



# VisioPointer

VISUAL INSPECTION OF PACKAGES



**TRIVISION**  
Vision beyond imagination



## Why...

- Consumers and retailers increasingly demand flawless products.
- Producers strive for high quality, low failure rates and increase in production yield.
- Laws and regulations require food producers to have critical food safety markings on the packaging.
- Increasingly faster line speed makes it difficult and costly for human inspectors to remove nonconforming items reliably.
- Quality assurance and quality control are of key importance to most producers and retailers!



## Typical challenges

- Food ingredients contaminating the sealing.
- Poor sealing caused by incorrect adjustment of the heating station.
- Tunnel leak during sealing (folded foil).



- Wrong roll of labels installed.
- Wrong, missing or unreadable Barcode.
- Wrong, missing or unreadable Print



### Artwork

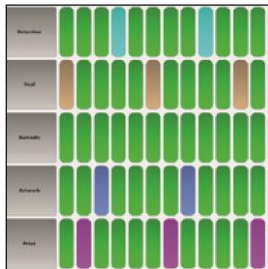
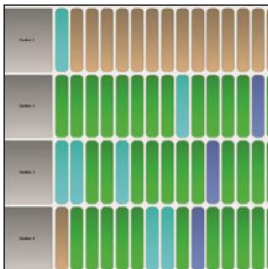
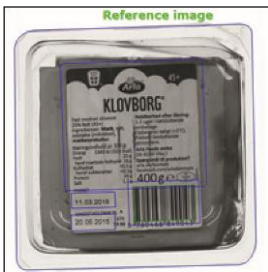
- Label not properly applied
- Text fuzzy or unreadable
- Incorrect language
- Incorrect weight

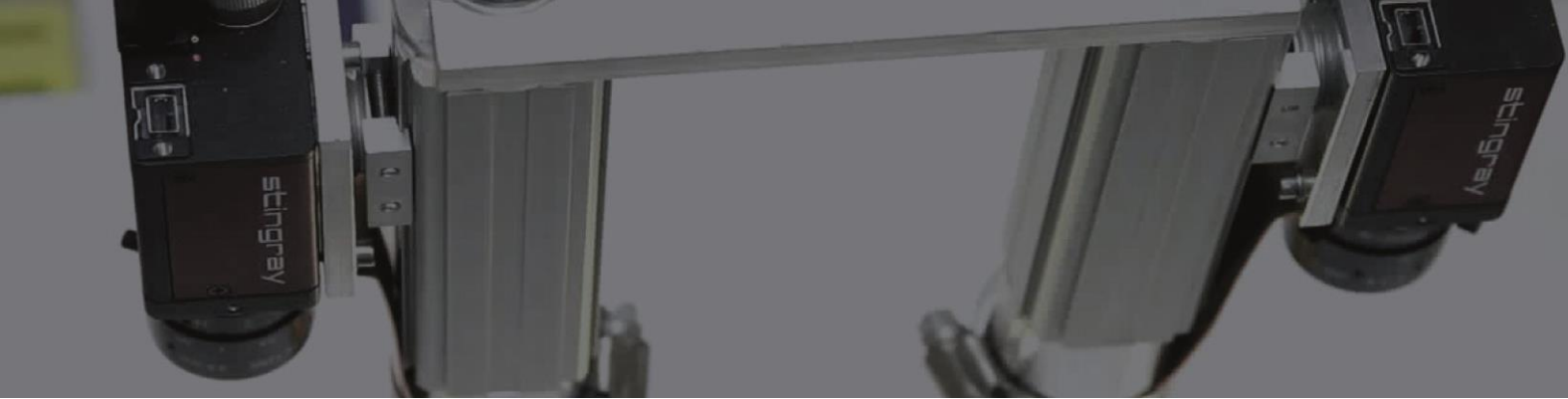




## A typical installation

- Installed in the packaging line after the packaging machine and label machine.
- Packages are running through the system on a conveyor.
- Two cameras, one from the top and one from the bottom capture images.
- Compares each set of images to the master images from a flawless package.
- Rejects packages which are outside the tolerances defined by the operator.
- Holds production data to analyse error patterns and document product inspection.
- Helps to identify cause of error and proactively improve the production yield.





## Seal inspection

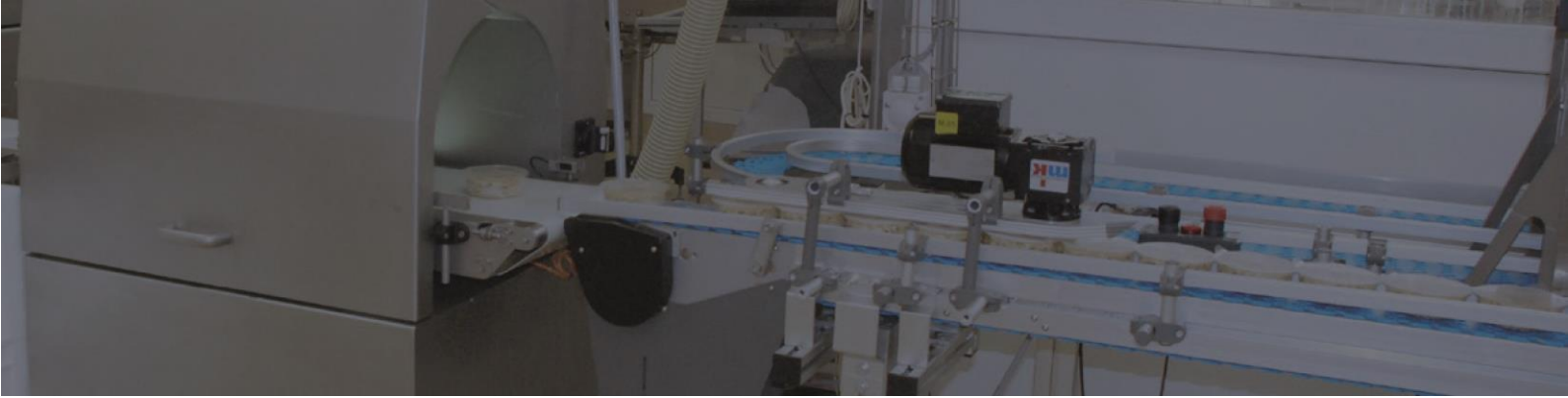
- VisioPointer detects any kind of visible contamination in the sealing. Also other kind of seal defects, like welding errors or folds are detected if they are visible to the human eye.
- The sensitivity is specified by the user and can be set to different levels for different product types.
- The percentage of required non-broken sealing is specified by the user.
- The inspection of the seal is performed constantly and uniformly and with a much higher reliability and constancy compared to a human inspection.



## Barcode reading

VisioPointer inspects the barcode for

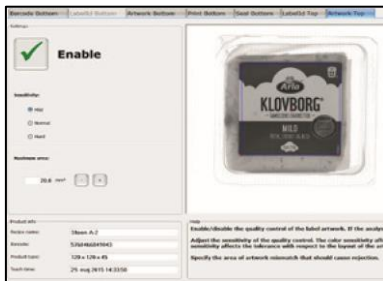
- Correct barcode.
- Readability of barcode.
- Correct position of barcode (relatively to the packet).



## Artwork - top and bottom

VisioPointer inspects the label for

- Correct artwork.
- Flawless artwork.
- Correct position of the label (relatively to the packet).



## Print inspection

VisioPointer inspects the printing for

- Readability / degree of darkness.
- Correct position of the print (relatively to the label).
- Correct date (OCR/OCV) compared to computer time.
- Correct date according to data from ERP system.





# Production Optimization Module



One column represents one package.  
Each bar in a column reflects the result of the specific inspection performed.

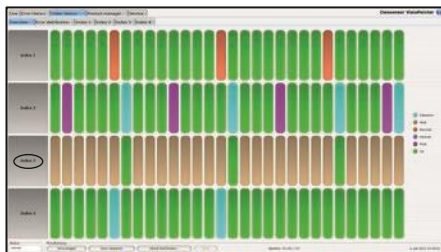
- The VisioPointer Production Optimization module ensures that a production line actually produces more good products than a production line without the VisioPointer system.
- The time for return of investment in a VisioPointer system is very short while the quality of the products is increased significantly.



The number of sealing errors is high.

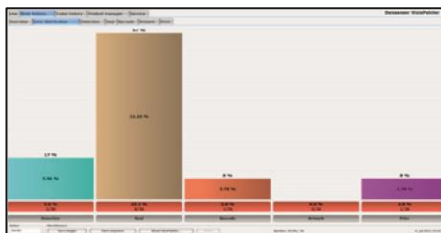
The VisioPointer Production Optimization module gives

- Instant overview of current production quality.
- With one single look, the operator can check the status of every quality measure related to the production line.
- Specific and adequate information for quick return to optimal production.
- An instruction can be attached to each error, assisting the operator in making a quick and competent repair.
- Statistical data for maintenance of the production tools.



The sealing errors are all related to Index3.

- The VisioPointer Production Optimization Module relates every error to the specific tool which produced the error.
- If a tool constantly is producing products with flaws, it will quickly be visible on the POM.
- The related images are stored for each tool in order to give the operator the optimal information for a quick rectification of the problem.



- The VisioPointer POM displays the distribution of the total number of errors since the last reset.
- The error distribution is displayed on basis of the error types as well as on basis of the production tools.
- This gives the maintenance responsible an efficient tool for initiating the preventive measures in correct time.



## Cloud solution

- The measured data can be hosted via a Cloud Solution.
- Web-interfaces are available for extraction of data.
- This makes it possible for the user to extract information anywhere – and anytime.
- No need for storage or printing of documentation.
- A perfect tool for documentation, traceability and production analysis.
- A specific interface can be made for documentation between you and your customer.

## Service and support

TriVision provides our support program for the unit, including

- Remote diagnostics
- Quick support
- PMA – Preventive Maintenance Agreements
- Recommended spare parts list
- Software upgrades.